

The CT-Assist_Module 6.0

Add-On for the SAP® ABAP™ Workbench

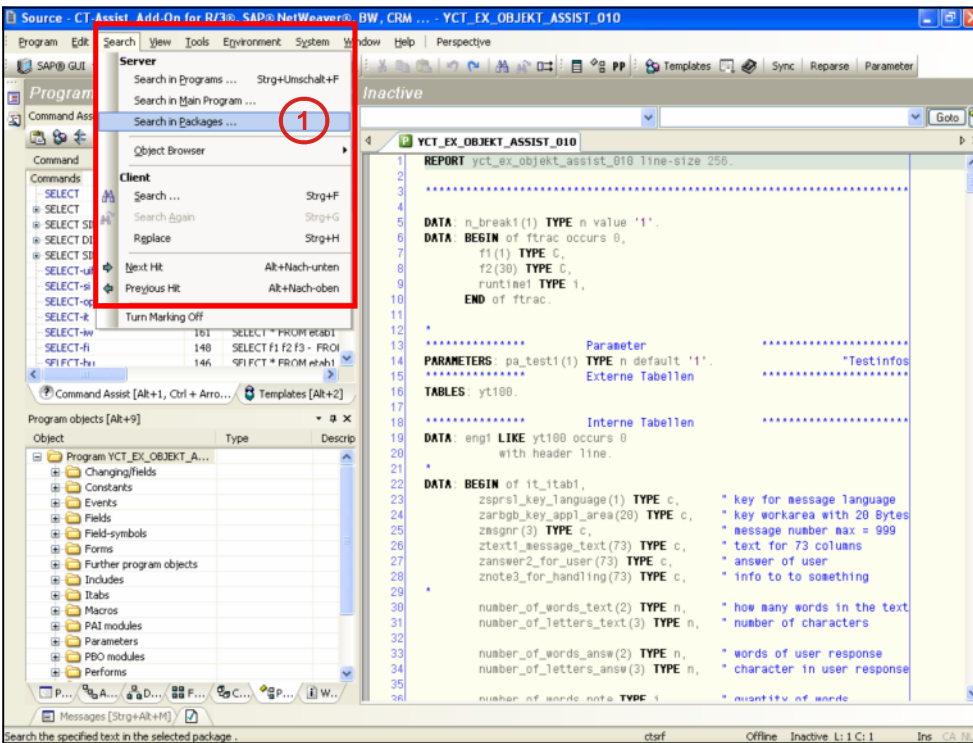
ABAP™ coding search in application components

ABAP™ search coding in application components

With this function the complete ABAP™ source code of a specific topic can be searched (e.g. all sources from the area "Sales"). Just mark the appropriate components in the application tree and the program will search all corresponding packages automatically.

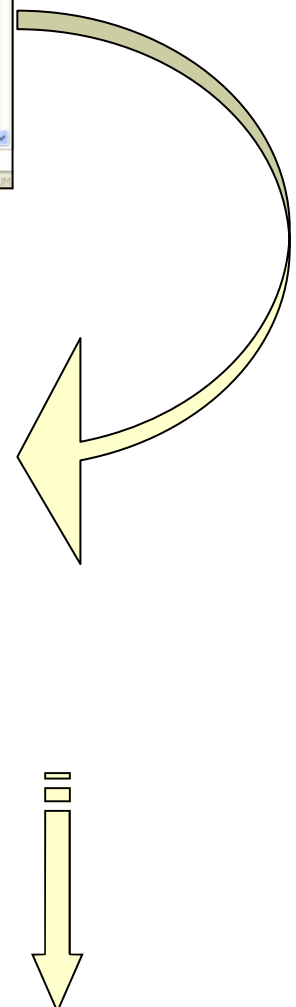
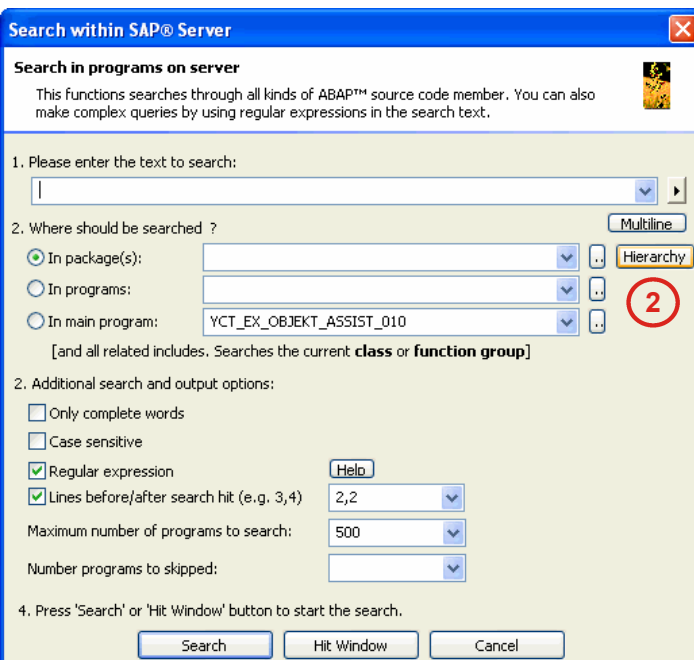
we now show you how to select a group of packages with the help of the application tree.

1 Select 'Search in Packages'



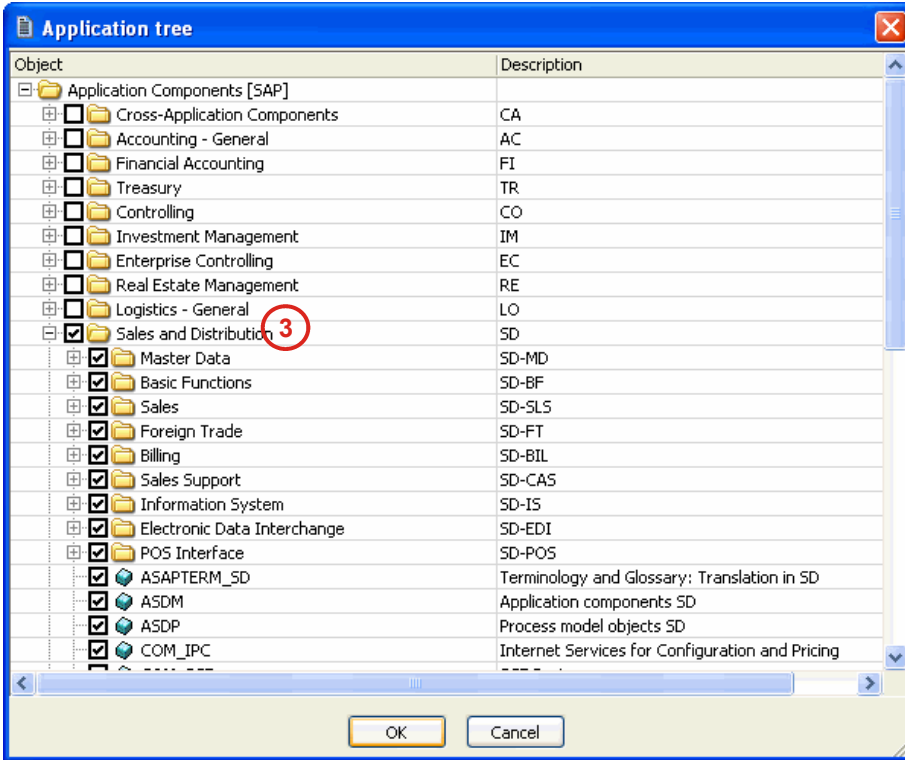
2 Press the button 'Hierarchy'

The application hierarchy is started.



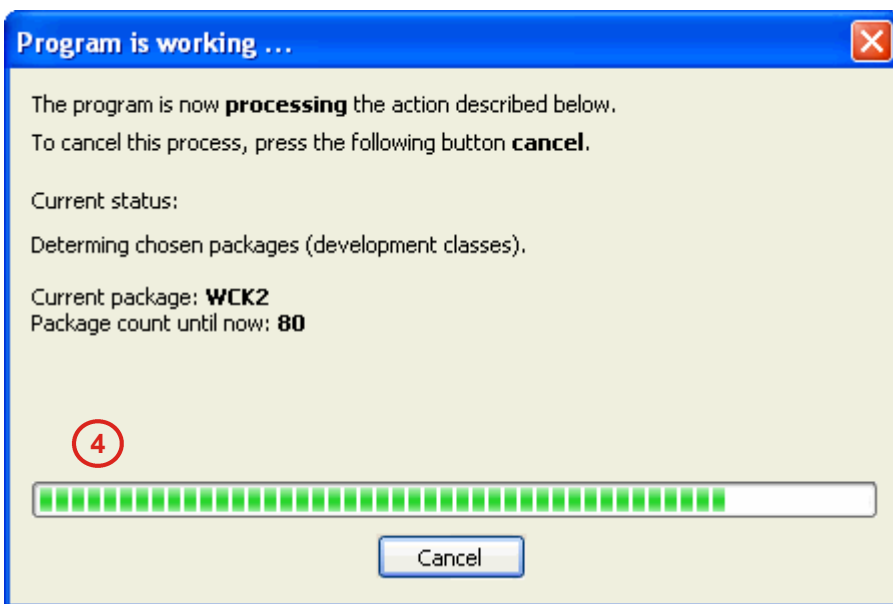
3 Select packages from application tree (e.g. 'Sales and Distribution')

The application hierarchy is shown as a tree. The tree contains two folder symbols: Check boxes and package symbols. You can check a complete component or single packages. If you want to expand a complete 'tree branch' you can use the context menu.



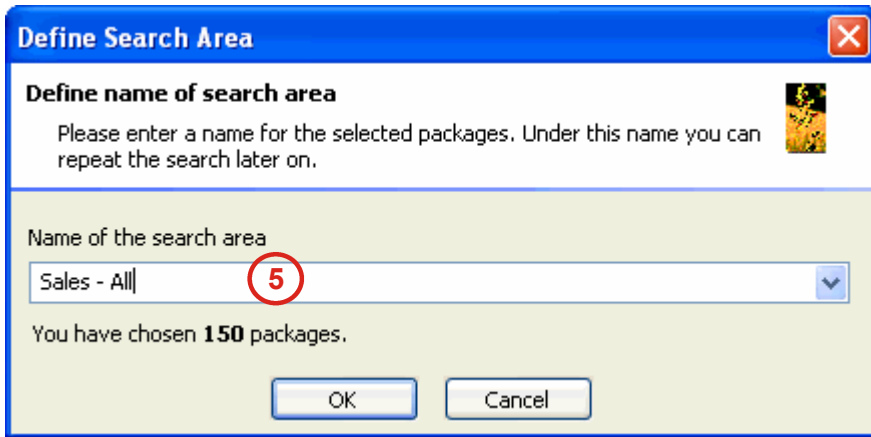
4 Program is working...

After you have selected the components please press the "OK" button. The program now loads the application components. This process may take some time depending on the number of packages.



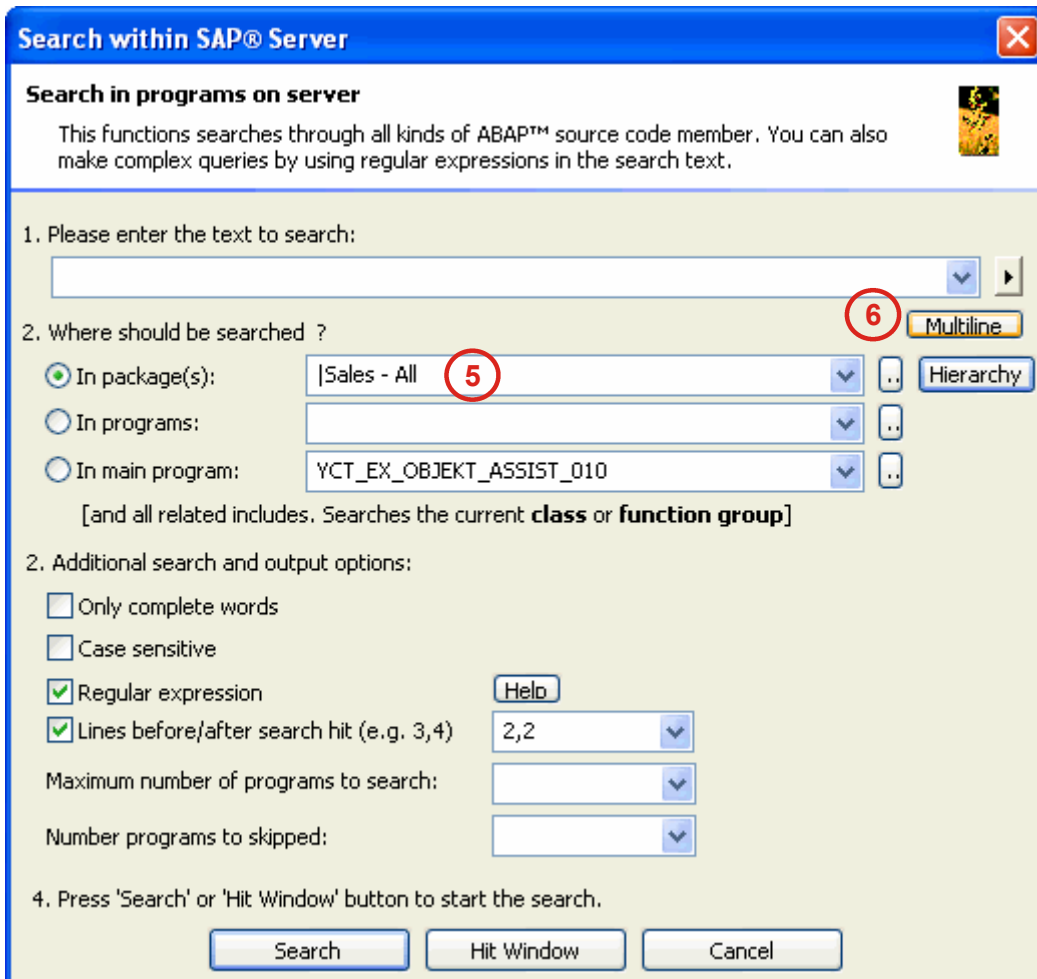
5 Name of the search area

The selected packages names are now saved for further search actions. Please enter a name:



6 Press the 'Multiline' button to enter a multiline search string

The container name will be placed in the package input field. It starts with a vertical line to distinguish between package names and container names. The container name is also saved in a history list. Please now select the 'Multiline' button to enter the search string.



7 Please enter the first and the second search string

After you have entered the string press the 'OK' button **8**

Multiline Search

1. Please enter the **first search string**:

billing **7**

2. Please enter the **second search string**:

proforma **7**

3. Size of the search area:

2 **Lines**

8 OK Cancel

9 Search string is inserted

After the string was inserted you can check some search options (e.g. display 2 lines before and two lines after the search hit **10**)

Search within SAP® Server

Search in programs on server

This functions searches through all kinds of ABAP™ source code member. You can also make complex queries by using regular expressions in the search text.

1. Please enter the text to search:

billing.*(proforma|\n.*proforma|\n.*\n.*proforma) **9**

2. Where should be searched ?

In package(s): |Sales - All **Multiline**

In programs:

In main program: YCT_EX_OBJEKT_ASSIST_010 **Hierarchy**

[and all related includes. Searches the current **class** or **function group**]

2. Additional search and output options:

Only complete words

Case sensitive

Regular expression **Help**

Lines before/after search hit (e.g. 3,4) 2,2 **10**

Maximum number of programs to search:

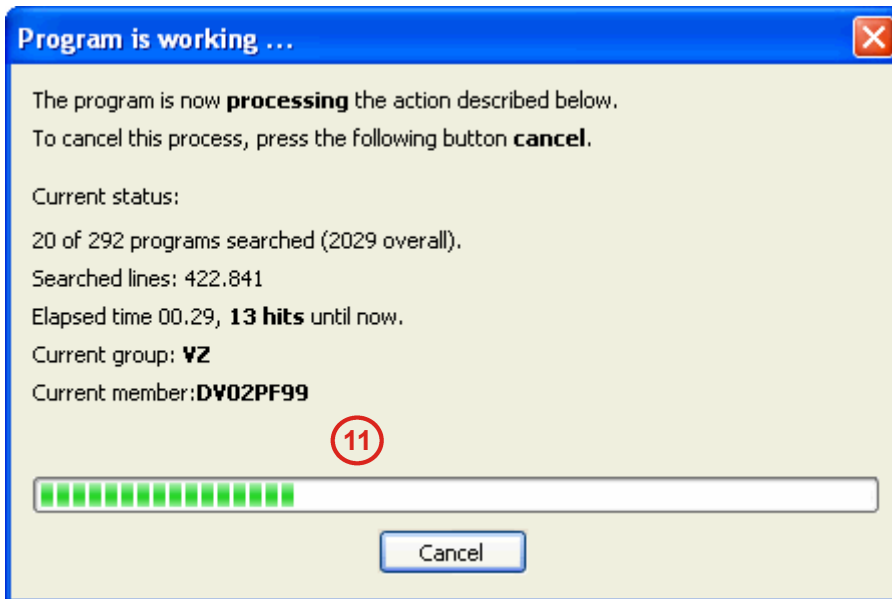
Number programs to skipped:

4. Press 'Search' or 'Hit Window' button to start the search.

Search Hit Window Cancel

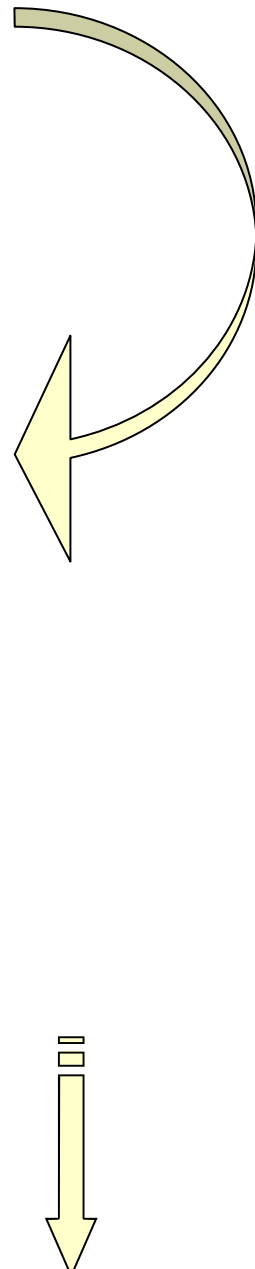
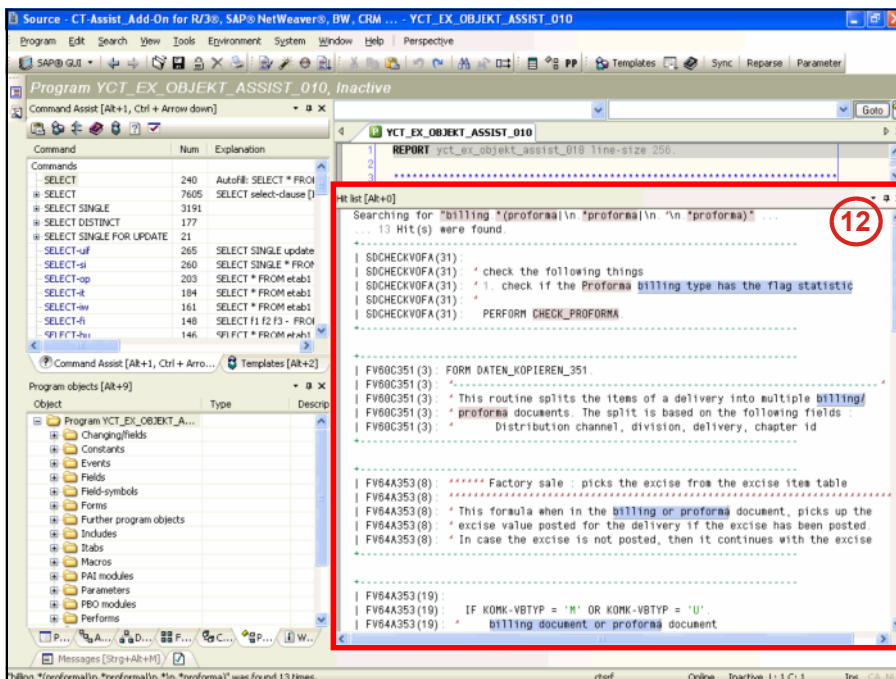
11 Search operation runs

After you have pressed the button 'Search' the search is carried out. The progress of the search task is displayed in a pop-up window.



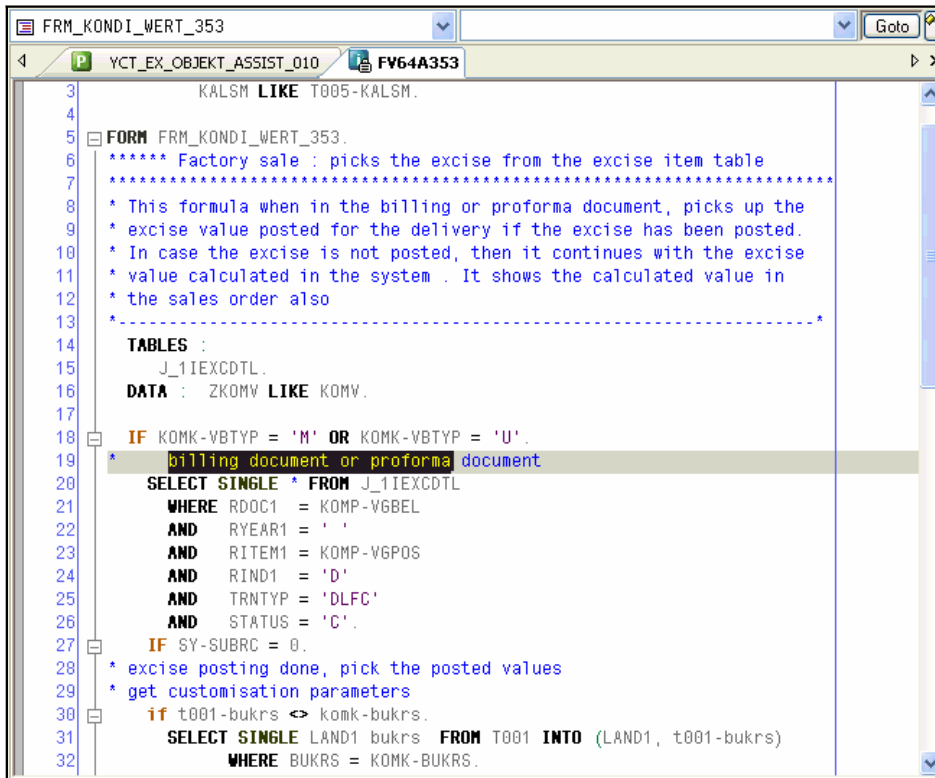
12 After the process is completed the search hits are shown

Finally the search hits are shown in the integrated hit window.



13 Double-click on a search hit

Through double click on a search hit, the respective source code is loaded into a new source window.



The screenshot shows a source code editor window titled 'FRM_KONDI_WERT_353'. The code is in German and includes several comments and SQL statements. A search hit is highlighted in yellow on line 19: '* billing document or proforma document'. A yellow arrow points from the right side of the page towards this search hit.

```

3      KALSM LIKE T005-KALSM.
4
5  FORM FRM_KONDI_WERT_353.
6  ***** Factory sale : picks the excise from the excise item table
7  *****
8  * This formula when in the billing or proforma document, picks up the
9  * excise value posted for the delivery if the excise has been posted.
10 * In case the excise is not posted, then it continues with the excise
11 * value calculated in the system . It shows the calculated value in
12 * the sales order also
13 *-----*
14 TABLES :
15   J_1IEXCDTL.
16 DATA : ZKOMV LIKE KOMV.
17
18 IF KOMK-VBTYP = 'M' OR KOMK-VBTYP = 'U'.
19 * billing document or proforma document
20 SELECT SINGLE * FROM J_1IEXCDTL
21 WHERE RDOC1 = KOMP-VGBEL
22 AND RYEAR1 = ' '
23 AND RITEM1 = KOMP-VGPOS
24 AND RIND1 = 'D'
25 AND TRNTYP = 'DLFC'
26 AND STATUS = 'C'.
27 IF SY-SUBRC = 0.
28 * excise posting done, pick the posted values
29 * get customisation parameters
30 if t001-bukrs <> komk-bukrs.
31 SELECT SINGLE LAND1 bukrs FROM T001 INTO (LAND1, t001-bukrs)
32 WHERE BUKRS = KOMK-BUKRS.
    
```

Contact

CT-Softwareberatungs GmbH
Ziegeleiweg 8
33415 Verl

Germany

Web: www.ct-software.com

Email: suport@ct-software.com
info@ct-software.com
sales@ct-software.com

Tel: +49-(0)5246-9310-15
Fax: +49-(0)5246-9310-16