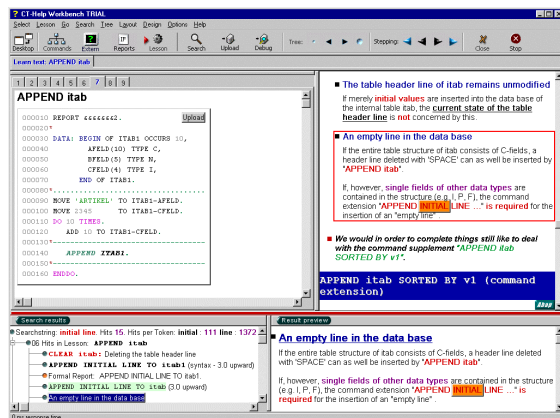


SUPPORT DURING THE PROGRAM DEVELOPMENT

The knowledge base of the 'CT-Help Workbench' corresponds in most parts to the information of the 'CT-Professional_100 Suite'. More than 13.000 text objects (small to medium size text sections) are used to describe in detail often used and important commands of the ABAP™ programming language. Especially, the important commands ought to be known and applied precisely.

For each ABAP™ statement within the CT-Help Workbench syntax checked executable report examples are available (approx. 600 altogether). The processing time of the complete language elements is approx. 150 hours.

The CT-Help Workbench will help you to get into the practice. Furthermore the button "EXTERNAL" within the CT-Help Workbench leads you to the original SAP® GUI and displays the whole help documentation of the ABAP™ commands.



The focus of the 'CT-Help Workbench' lies on the direct support at the program development workplace.

LEARNING FUNCTIONS

- ✓ Integration of the 'CT-Help_Workbench' via RFC live to the R/3® system! A simulation (e.g. via CBT) cannot replace the practical side.
- ✓ Search the different categories of the knowledge base. Depending on your needs, you can search in the area of 'syn-

'synonyms' (important keywords) or e.g. in the area of report examples.

- ✓ Fast full text search through word indexing (13.000 text objects, 600 report examples) Nobody likes to wait.
- ✓ More than 600 syntax-checked and executable reports for transferring theory in practice. The debugging mode shows you the use of the ABAP™ commands in realtime.
- ✓ The report examples with about 45.000 lines of code (ABAP™) can be used as a library for fast prototyping. This offers the possibility of a trial and error approach when incorporating new program parts.
- ✓ Within the debugging mode of the 'CT-Help_Workbench' 'important subroutines and program parts will be described. Some notes to different program parts supports you during the debugging mode.
- ✓ More than 2.000 dynamic overlay drawings and notes. Especially when describing the syntax of commands, it is helpful to mark dynamically the respective coding parts in the report examples.
- ✓ Summary of all search hits in a separated window. Get an overview ...
- ✓ Direct positioning from search hit to the text section. A direct text link saves time.
- ✓ Hyperlink from the search hit to the command description (forward and backward spooling) . The information before and after key words are also important
- ✓ Direct link from report examples to the appropriate text section. If you would like to know further details of the report.
- ✓ Additionally the ABAP™ Hypertext documentation can be started in an extra SAP®

GUI. The system documentation is still available for you.

- ✓ Multiple layouts are available. You decide which CT-Help Workbench layout is optimal for your current work.

SYSTEM REQUIREMENTS

Operating system	Windows® NT 4.0 / 2000 / XP®
Processor	Pentium®
Main memory	Minimum 256 MB
Graphic cards	65,000 colors or higher
Monitor	17 inches, 1024 x 768 or higher
Disk memory	Approx. 40 MB
CD-ROM	Only for installation



CT-Softwareberatung GmbH
Ziegeleiweg 8 - 33415 Verl – Germany
Web: www.ct-software.com
email: sales@ct-software.com
Tel: +49-(0)5246-9310-15
Fax: +49-(0)5246-9310-16

Copyright © 2006 CT-Softwareberatung GmbH. All rights reserved. Microsoft®, WINDOWS®, NT®, XP® are registered trademarks of Microsoft corporation. SAP®, R/3®, mySAP™, ABAP™ are trademarks of SAP AG. All other products mentioned are the trademarks of the respective companies.