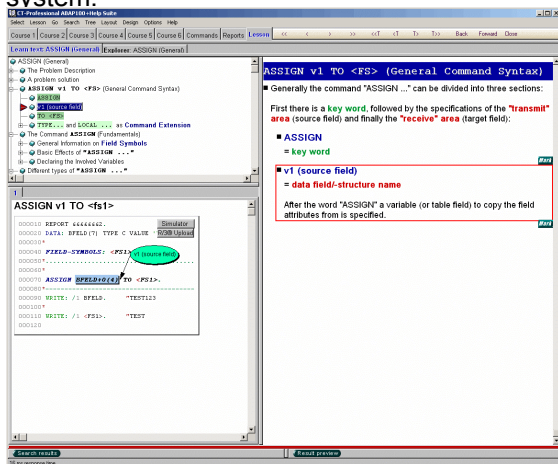


The inter-active learning system for ABAP™ combines theory and practice with Real-time connection to an SAP® system. The retrieval help functions additionally support the user during the programming. The ABAP™ course is for beginner, advanced and retraining users coming from other programming languages like Cobol or Pascal.

eLEARNING

The course suite "CT-Professional_100+Help" contains 6 single courses on the subject ABAP™ programming.

Here you get a very detailed description (approx. 150 hours reading time!) of frequent/important language elements. For every language element there are syntax checked executable report examples available (approx. 600 in total). The highlight of the course suite is the real-time connection to an SAP® R/3® system.



The report examples can be loaded live into the R/3® system (see screenshot) and tested in a special guided debugging mode. Within the R/3® Debugger important coding parts are annotated directly through overlay drawings and texts. The CT-Debug Simulator is also integrated in the course, especially suitable for beginners.

THE HELP FEATURES

Full text search

Through different search requests the user will be supported in his daily programming work. The complete content of the CT-Professional_100 course suite (6 ABAP™ courses) is available in full text retrieval. Through search functions (in combination with AND, OR, NOT) specific words of the CT-Professional_100 content are displayed in hit tree lists.

Synonym word search

Not immediately known ABAP™ language elements can also be located by synonym words.

Retrieval in report examples

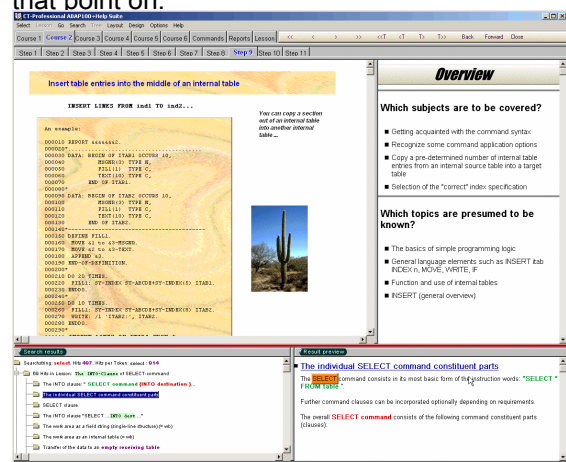
If the user wants to find reports examples (for his current coding problem) , the retrieval can be narrowed for example only to report examples. The search results are presented hierarchically in a found tree. After reading a short report summary, the user can jump to report. The found hits are marked and the report itself is displayed with syntax highlighting.

Retrieval in special, central report example commands

Each report focus on a different ABAP™ language aspect. These special keywords, can also be part of a query (which report deals with ASSIGN?).

Retrieval in learn sections

The complete lesson pool can be queried in full text search, if a learn section was found, the user can go directly to the corresponding lesson. This lesson can now be processed from that point on.

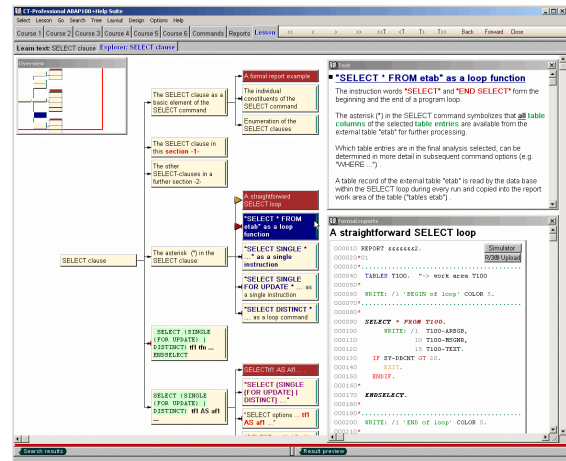


External retrieval in the host system

The external help button will switch to the SAP® system documentation (which was parallel queried in the background).

LEARNING FUNCTIONS

- ✓ More than **600** syntax checked and executable example reports for testing of the practical side and further development.
- ✓ More than **13000** text objects (small to medium text sections) for the description of frequent/important ABAP™ commands.
- ✓ More than **2000** dynamic overlay markings and remarks in text sections.
- ✓ Presentation desktop with a large range of function.
- ✓ Complete synchronization of the learn elements means that for example each lesson step could be recalled with the current overlay drawings simply by double clicking on that text step.
- ✓ Important program sections are highlighted with overlay drawings.
- ✓ All shown ABAP™ reports are listed in separate report tree, the respective report can be viewed with syntax highlighting simply by double clicking in the report tree.
- ✓ Lesson content can be presented step by step or as a help text (in this case the learn elements are created in the background while the user reads).
- ✓ The lesson stage can be saved and restored.
- ✓ Report examples can be viewed in **8** different syntax highlightings.
- ✓ Fonts and text colors can be changed by the user.
- ✓ **9** different layouts of the presentation surface are available.
- ✓ **9** different designs can be combined with the layouts and lead to an individual learning environment .
- ✓ Explorer mode shows lessons alternatively as a graphical tree where the user can navigate very fast .



- ✓ **12** predefined Look&Feels plus the ability to create own Look&Feels.
- ✓ Variable zoom factor by right click for every window.
- ✓ **23** different possibilities to configure the information trees.
- ✓ Overlay drawings and lesson texts are displayed with **12** different effects.
- ✓ All effects can be tuned or modified by the user.

So, you have about **150** hours of lessons which are at your disposal. You can develop intensively the programming language ABAP™ on different stages. You determine the learning speed and when you want to repeat a learning section.

SYSTEM REQUIREMENTS

Operating system	Windows® NT 4.0 / 2000 / XP®
Processor	Pentium®
Main memory	Minimum 256 MB
Graphic cards	65,000 colors or higher
Monitor	17 inches, 1024 x 768 or higher
Disk memory	Approx. 40 MB
CD-ROM	Only for installation



CT-Softwareberatung GmbH
 Ziegeleiweg 8 - 33415 Verl – Germany
 Web: www.ct-software.com
 email: sales@ct-software.com
 Tel: +49-(0)5246-9310-15
 Fax: +49-(0)5246-9310-16

Copyright © 2006 CT-Softwareberatung GmbH. All rights reserved. Microsoft®, WINDOWS®, NT®, XP® are registered trademarks of Microsoft corporation. SAP®, R/3®, mySAP™, ABAP™ are trademarks of SAP AG. All other products mentioned are the trademarks of the respective companies.