

HIGH QUALITY CBT...

Regarding different types of business and industry one subject area is named relatively frequently:

" ... the acquisition of know-how in the field of SAP® R/3® technology ..."

Sufficient knowledge of the ABAP™ programming language is important. Only with the aid of this programming language can the necessary interrelationships within the R/3® technology be developed. This strategically important software development target (and related fields of activity) can be reached through High Quality CBT better than standard CBT and more flexible than face-to-face training

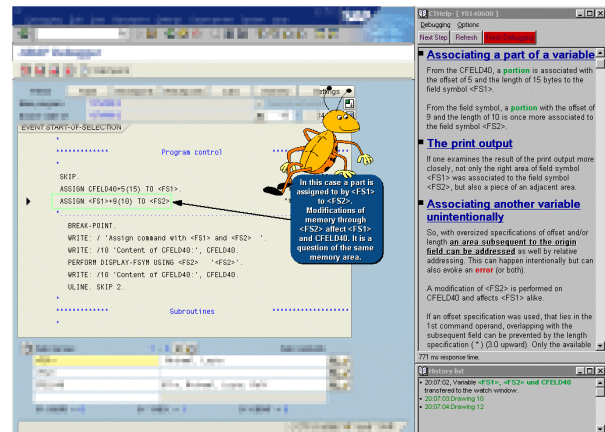
FEATURES OF HIGH QUALITY CBT FOR ABAP™

- ✓ RFC connection to the R/3® system via own function modules
- ✓ Upload of report examples to the host (possibility of tests and expansions),
- ✓ Extensive knowledge base,
- ✓ Variable functions of the CBT learning tool (presentation surface),
- ✓ Several learning modes (for beginners, advanced)
- ✓ Simulators (outside of R/3®) for first tests (e.g. CT-Debug Simulator)
- ✓ Support in the R/3® during interactive input through real-time Help (e.g. CT-Assistant)
- ✓ Live display of current objects in the R/3® by front-end programs (e.g. CT-Tutor)

LEARNING FOR THE PRACTICAL SIDE

The highlight of the course suite is the real-time connection to an SAP® R/3® system.

The report examples can be loaded live into the R/3® system (see screenshot) and tested in a special guided debugging mode. Within the R/3® debugger important coding parts are annotated directly through overlay drawings and texts. The CT-Debug Simulator is also integrated in the course, especially suitable for beginners.



THE LEARNING CONTENT

More than **13,000** text objects (small to medium text sections, overlay illustrations and so on) are available as a knowledge base within a description of selected language elements.

Selection and documentation of the commands from within the language range of ABAP/4® were carried out by experienced consultants. With regard to this, the following considerations were in the forefront:

- ✓ What commands frequently involve "pre-programmed" bugs (e.g. DELETE, IF, MOVE)
- ✓ What commands are time-critical and should be used with care? (e.g. SELECT, WHERE)
- ✓ What commands are especially suitable for effective code? (e.g. ASSIGN, PERFORM, DATA)

The theoretical explanations are demonstrated in more than 600 syntax-checked and executable report examples. For this purpose about 45.000 code lines had to be used.

In about 150 hours (average learning time per test person) the study material can be called up and grouped into 6 courses in terms of increasing difficulty.

The report examples can be tested directly on the application server of the R/3® system. Using an RFC connection the option exists to load and test the reports in an own name range per user.

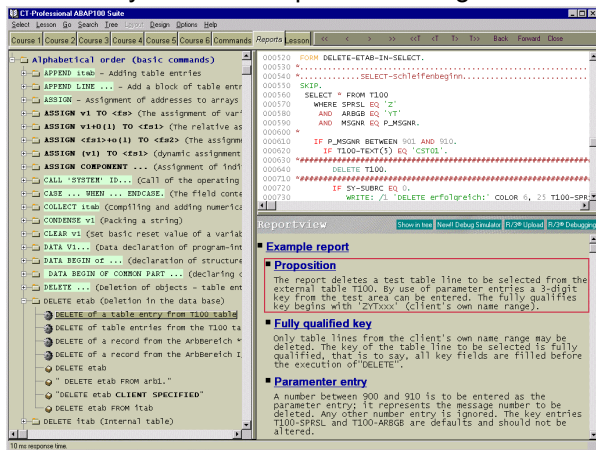
The debugging mode is supported by additional comments and overlay illustrations. A self-debugging mode simplifies its use.

LEARNING AIMS

Write small ABAP™ programs after a short time with a few but appropriate commands!

It is sufficient in our opinion to know only a few commands of the ABAP™ programming language at the beginning to manage simple programming requests of your department. However, these language elements should have been truly understood and mastered.

As a lexicon with several volumes, the knowledge is successively built up in the several ABAP™ courses (1-6). You determine the learning speed and when you want to repeat a learning section.



LEARNING FUNCTIONS

- ✓ More than **600** syntax checked and executable example reports for testing in practice and further development.
- ✓ More than **13000** text objects (small to medium text sections) for the description of frequent/important ABAP™ commands.
- ✓ More than **2000** dynamic overlay markings and remarks in text sections.
- ✓ Presentation desktop with a large range of function.
- ✓ Complete synchronization of the learn elements means that for example each lesson step could be recalled with the current overlay drawings simply by double clicking on that text step.



CT-Softwareberatung GmbH
 Ziegeleiweg 8 - 33415 Verl – Germany
 Web: www.ct-software.com
 email: sales@ct-software.com
 Tel: +49-(0)5246-9310-15
 Fax: +49-(0)5246-9310-16

- ✓ Important program sections are highlighted with overlay drawings.
- ✓ All shown ABAP™ reports are listed in separate report tree, the respective report can be viewed with syntax highlighting simply by double clicking in the report tree.
- ✓ Lesson content can be presented step by step or as a help text (in this case the learn elements are created in the background while the user reads).
- ✓ The lesson stage can be saved and restored.
- ✓ Report examples can be viewed in **8** different syntax highlightings.
- ✓ Fonts and text colors can be changed by the user.
- ✓ **9** different layouts of the presentation surface are available.
- ✓ **9** different designs can be combined with the layouts and lead to an individual learning environment .
- ✓ Explorer mode shows lessons alternatively as a graphical tree where the user can navigate very fast.
- ✓ **12** predefined Look&Feels plus the ability to create own Look&Feels.
- ✓ Variable zoom factor by right click for every window.
- ✓ **23** different possibilities to configure the information trees.
- ✓ Overlay drawings and lesson texts are displayed with **12** different effects.
- ✓ All effects can be tuned or modified by the user.

SYSTEM REQUIREMENTS

Operating system	Windows® NT 4.0 / 2000 / XP®
Processor	Pentium®
Main memory	Minimum 256 MB
Graphic cards	65,000 colors or higher
Monitor	17 inches, 1024 x 768 or higher
Disk memory	Approx. 40 MB
CD-ROM	Only for installation

Copyright © 2006 CT-Softwareberatung GmbH. All rights reserved. Microsoft®, WINDOWS®, NT®, XP® are registered trademarks of Microsoft corporation. SAP®, R/3®, mySAP™, ABAP™ are trademarks of SAP AG. All other products mentioned are the trademarks of the respective companies.