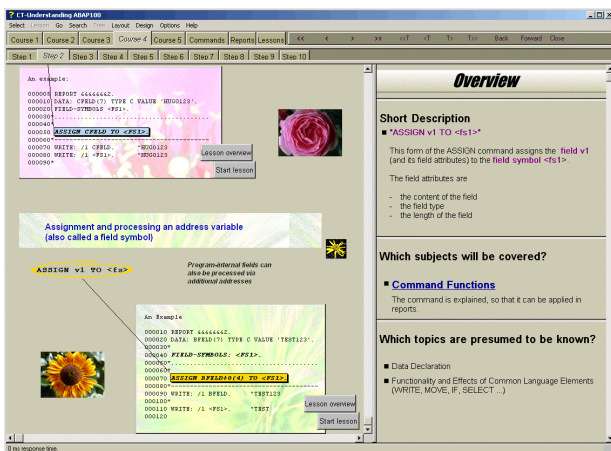


A NEW PHILOSOPHY TO LEARN ABAP™...

"The theory representation in programming courses (syntax notation, functional explanations and so forth) sometimes leads to a dry and sober lecture on the corresponding programming manual."

Our debug-simulator is supposed to change that, learning should be interesting. It should be the goal that every USER can learn in his own learning-rhythm. The user also should decide when, how and to which purpose the learning content is repeated.

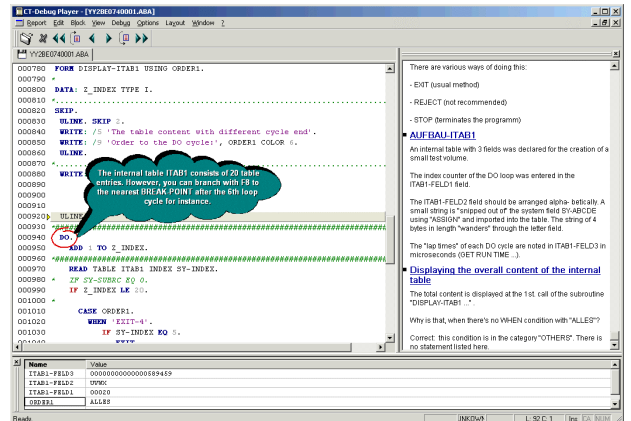


Our aim is, that you learn the theory in short text-sections in order then to call a -report example and follow the program flow in the debug simulator. Observe the changes of the variable contents, debug forward and also backwards.

"...did you ever see such a thing before?"

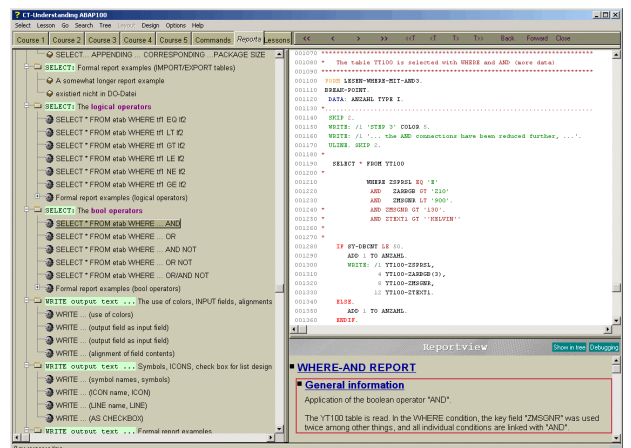
LEARNING FOR THE PRACTICAL SIDE

In our course line 'CT-Understanding_100' the programming language ABAP™ is taught in a very practical way. The focus of this course line is on our new tool 'CT-Debug_Simulator'.



With the CT-Debug_Simulator it is now for the first time possible to gather ABAP™ practice without having direct contact to an SAP® system. That means you can use the courses at the work place or alternatively at home. After finishing the courses you are able to work faster and more effectively with the ABAP™ language in a real R/3® system.

Delivered reports can be executed with the CT-Debug_Simulator. For the first time it is now possible independently from a R/3® system. The content of relevant variables can be displayed at every time during the debugging. The user can set or change breakpoints interactively and can also use the unique backward debugging feature.



Additionally a guided debugging mode ("Auto debugging") is implemented, in which important sub-programs and coding parts are automatically annotated. Here explanations are shown in a separate text window and overlay drawings are placed directly over the source code.

LEARNING AIMS

Write small ABAP™ programs after a short time with a few but appropriate commands!

It is sufficient in our opinion to know only a few commands of the ABAP® programming language at the beginning to manage simple programming requests of your department. However, these language elements should have been really understood and mastered.

As a lexicon with several volumes, the knowledge is successively built up in the several "Understanding ABAP™" courses. Short text sections for the theory and the CT-Debug_Simulator for practice from the basis of the courses

LEARNING CONTENT

The CT-Understanding_100 the courses 1 to 5 have a potential of more than 150 course hours. More than 12.000 text sections with more than 1800 overlay drawings contain the knowledge and are structured and can be positioned via info trees.

Through the debug simulation and the individual selection of more than 520 reports with approx. 40.000 lines of code you should get an additional learning success.

The evaluation of the respective report list output by the user provides further knowledge, so that the mean value of 140 course hours is clearly exceeded.

You can develop intensively the programming language ABAP™ on different stages. You determine the learning speed and when you want to repeat a learning section.

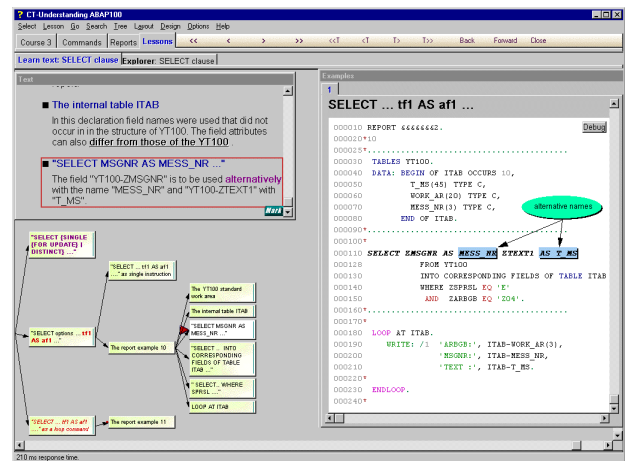
LEARNING FUNCTIONS

The presentation engine of the 'CT-Understanding_ABAP100' course line offers many features. Individual learning is supported by letting the user choosing his own learning environment. A summary of the functionality:

- ✓ Complete synchronization of the learn elements (learning texts, lesson overview, information

tree and example window) means that for example each lesson step could be recalled with the current overlay drawings simply by double clicking on that text step.

- ✓ All lessons are arranged alphabetically in separate lesson tree and have sub entry points for important learn sections.
- ✓ Important report sections are highlighted with overlay drawings.
- ✓ All shown ABAP™ reports are listed in separate report tree, the respective report can be viewed with syntax highlighting simply by double clicking in the report tree.



- ✓ Lesson content can be presented step by step or as a help text (in this case the learn elements are created in the background while the user reads).
- ✓ The lesson stage can be saved and restored.
- ✓ Explorer mode shows lessons alternatively as a graphical tree where the user can navigate very fast .
- ✓ Report examples can be viewed in 8 different syntax highlightings.
- ✓ Fonts and text colors can be changed by the user.
- ✓ 9 different layouts of the presentation surface are available.

- ✓ 9 different designs can be combined with the layouts and lead to an individual learning environment.
- ✓ 12 predefined Look&Feels plus the ability to create own Look&Feels.
- ✓ Variable zoom factor by right click for every window.
- ✓ 23 different possibilities to configure the information trees.
- ✓ Overlay drawings and lesson texts are displayed with 12 different effects.
- ✓ All effects can be tuned or modified by the user.

SYSTEM REQUIREMENTS

Operating system	Windows® NT 4.0 / 2000 / XP®
Processor	Pentium®
Main memory	Minimum 256 MB
Graphic cards	65,000 colors or higher
Monitor	17 inches, 1024 x 768 or higher
Disk memory	Approx. 40 MB
CD-ROM	Only for installation



CT-Softwareberatung GmbH
Ziegeleiweg 8 - 33415 Verl – Germany
Web: www.ct-software.com
email: sales@ct-software.com
Tel: +49-(0)5246-9310-15
Fax: +49-(0)5246-9310-16

Copyright © 2006 CT-Softwareberatung GmbH. All rights reserved. Microsoft®, WINDOWS®, NT®, XP® are registered trademarks of Microsoft corporation. SAP®, R/3®, mySAP™, ABAP™ are trademarks of SAP AG. All other products mentioned are the trademarks of the respective companies.